

name _____

Date _____

Per _____

Manipulating Graphs 2

BF.3

Use the following equation for each problem below:

$$f(x) = y = -2x + 3$$

If $f(x) = y$ & $f(x)$ only tells you what to do to manipulate the equation.

① $f(x) =$ _____

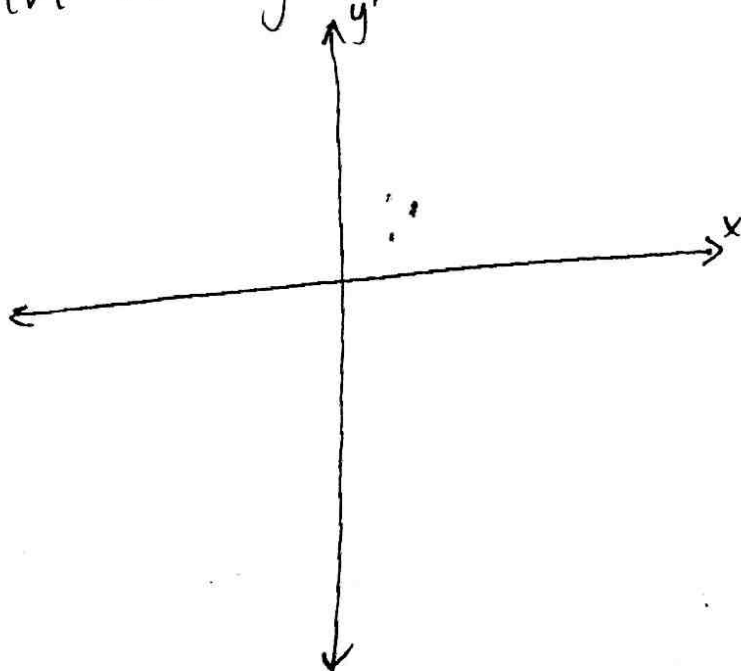
② $f(x) + 4 =$ _____

③ $4f(x) =$ _____

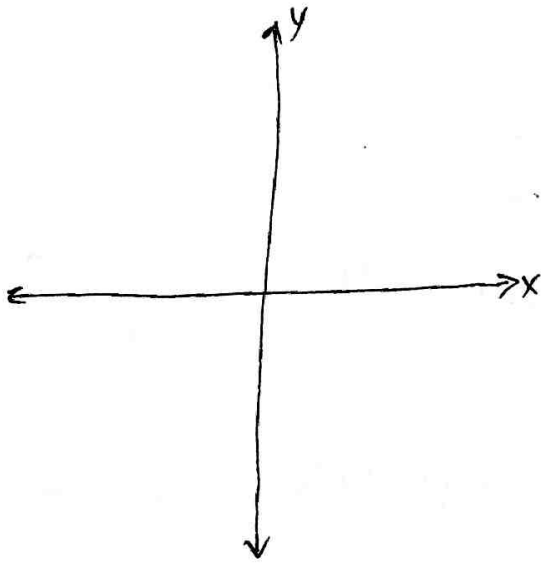
④ $f(4x) =$ _____

⑤ $f(x+4) =$ _____

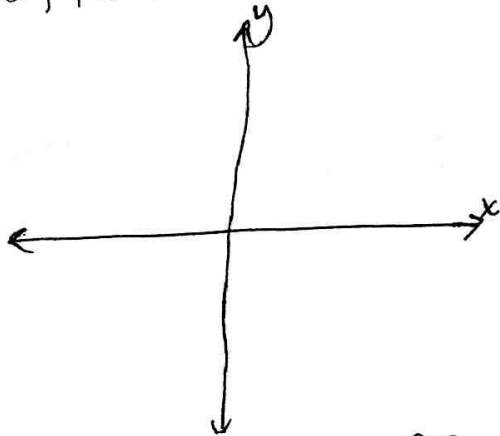
⑦ Graph $f(x)$ & $f(x)+4$ and describe the change in the graphs.



(8) graph $f(x)$ & $4f(x)$ and describe the change in the lines.



(9) Graph $f(x)$ & $f(4x)$ and describe the difference in the lines.



(10) Graph $f(x)$ & $f(x+4)$ & describe the change.

